



# PLAYA DEL SOL







LIVE BY DESIGN

  
**ELLINGTON**  
PROPERTIES

Since 2014, our distinctive design philosophy has set us apart in the industry. Over the years, Ellington has become synonymous with quality, integrity, and style. Every property in our esteemed international portfolio is crafted to inspire residents to live by design. Playa Del Sol, nestled on the exclusive shores of Al Marjan Island, is the latest addition to our collection—a sanctuary where wellness, fitness, and social indulgence blend seamlessly, inviting you to fully embrace a life shaped by purpose and design.





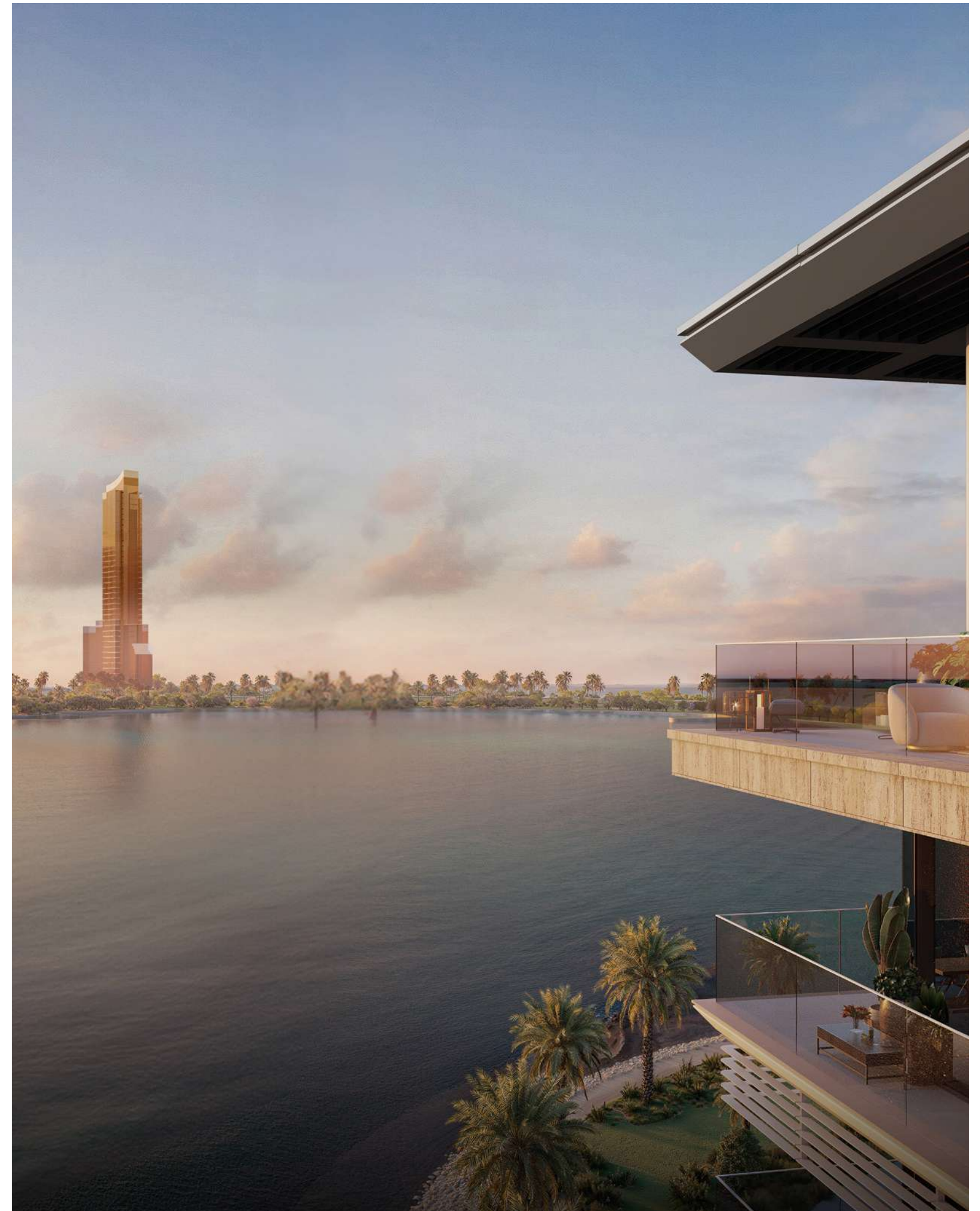
# ETHEREAL ESCAPE

Playa Del Sol redefines island living, perfecting every detail for a lifestyle that feels uniquely yours. Embrace a vibrant way of life, where each moment is filled with beauty, serenity, and the rhythm of island living. From sun-drenched mornings to starlit evenings, every day is an invitation to explore the natural wonders that surround you. Whether it's the gentle sway of palm trees, the soothing sound of waves lapping the shore, or the warmth of the ocean breeze, life here flows with an effortless grace. Indulge in a paradise where modernity and nature coexist in perfect harmony, and every day feels like a masterpiece of island bliss.





At Playa Del Sol, light holds a deeper meaning. It's not just the start of another day; it's an experience to awaken to, a moment to embrace as the world unfolds around you.





# A TIMELESS PANORAMA OF COASTAL LIVING







## COASTAL ELEGANCE

Playa del Sol perfectly embodies its essence with a design that radiates charm. The building's minimalist architecture features sleek lines and a facade that reflects the natural beauty of Al Marjan Island. Every detail has been thoughtfully curated to create a harmonious blend of modern elegance and coastal serenity.

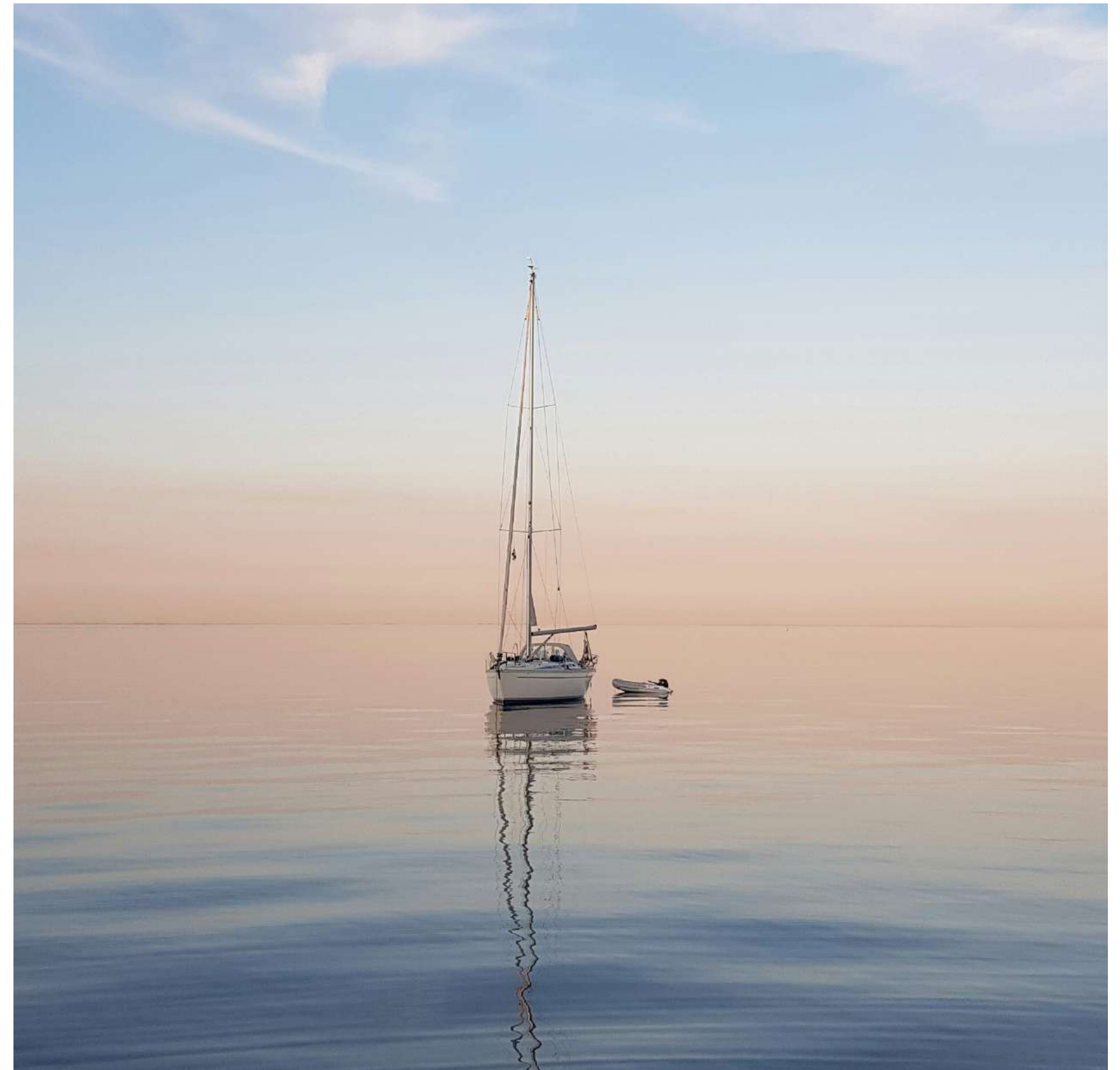




## A QUINTESSENTIAL ISLAND LIVING

Al Marjan Island offers a vibrant island lifestyle, surrounded by the pristine waters of the Arabian Gulf. This man-made archipelago in Ras Al Khaimah is known for its serene beaches, boutique resorts, and stunning views, making it an ideal coastal escape. The arrival of Wynn Resort further establishes Al Marjan Island as a premier destination for upscale tourism and refined island living.





The shimmering Arabian Gulf meets the sky in a breathtaking panorama, with vibrant sunrises and sunsets painting the horizon, offering serene beauty from every view.



A SEAMLESS BLEND  
OF COLOR AND LIGHT





# ARCHITECTURAL ICON

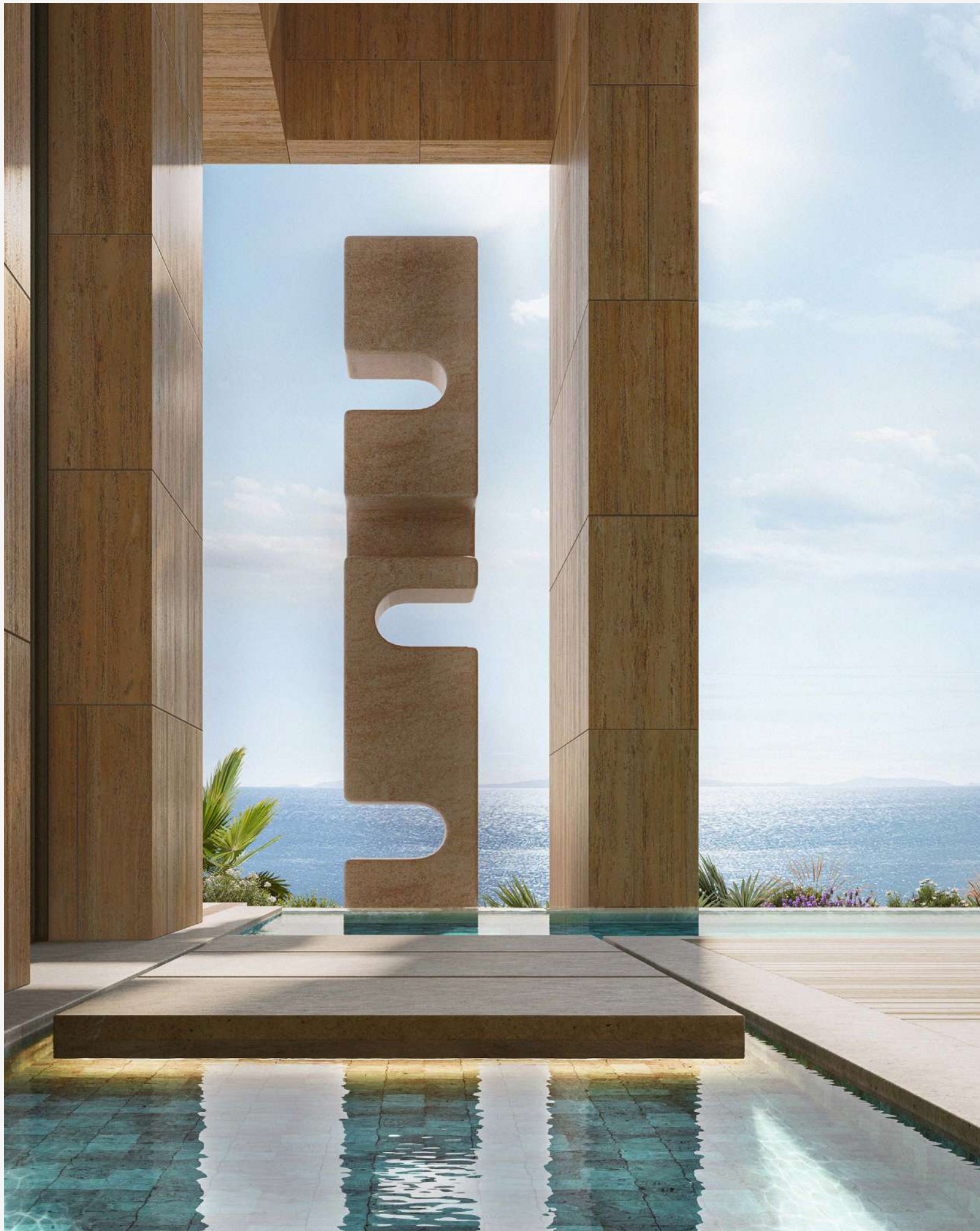
Playa Del Sol stands as a bold architectural statement, designed to immerse residents in stunning views of the Arabian Gulf while offering unparalleled proximity to the Wynn Resort. Meticulously crafted residences feature floor-to-ceiling windows and expansive terraces, blurring the line between indoors and outdoors. From dawn to dusk, every space is bathed in natural light, allowing residents to fully embrace the beauty of the sea throughout the day.











## SIGNATURE RESIDENCES

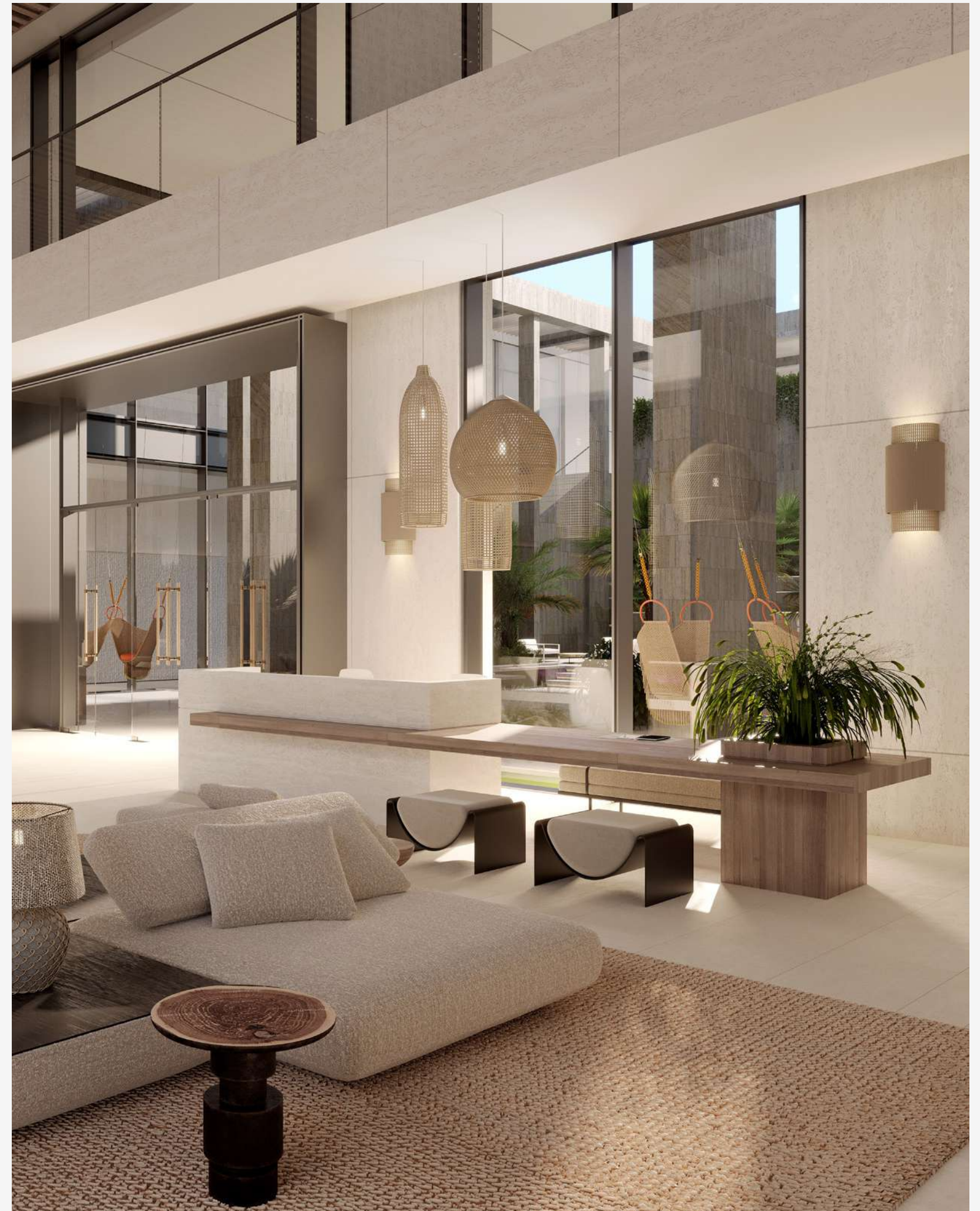
The signature residences at Playa Del Sol are grand private sanctuaries, offering expansive interiors with soaring ceilings, open-plan layouts, and floor-to-ceiling windows that fill the space with natural light. Thoughtfully crafted with high-end finishes and bespoke details, these homes offer an unmatched sense of grandeur and refined living.





ELLINGTON





The lobby offers a cozy seating lounge with plush chairs and warm ambient lighting, creating a welcoming and inviting atmosphere.

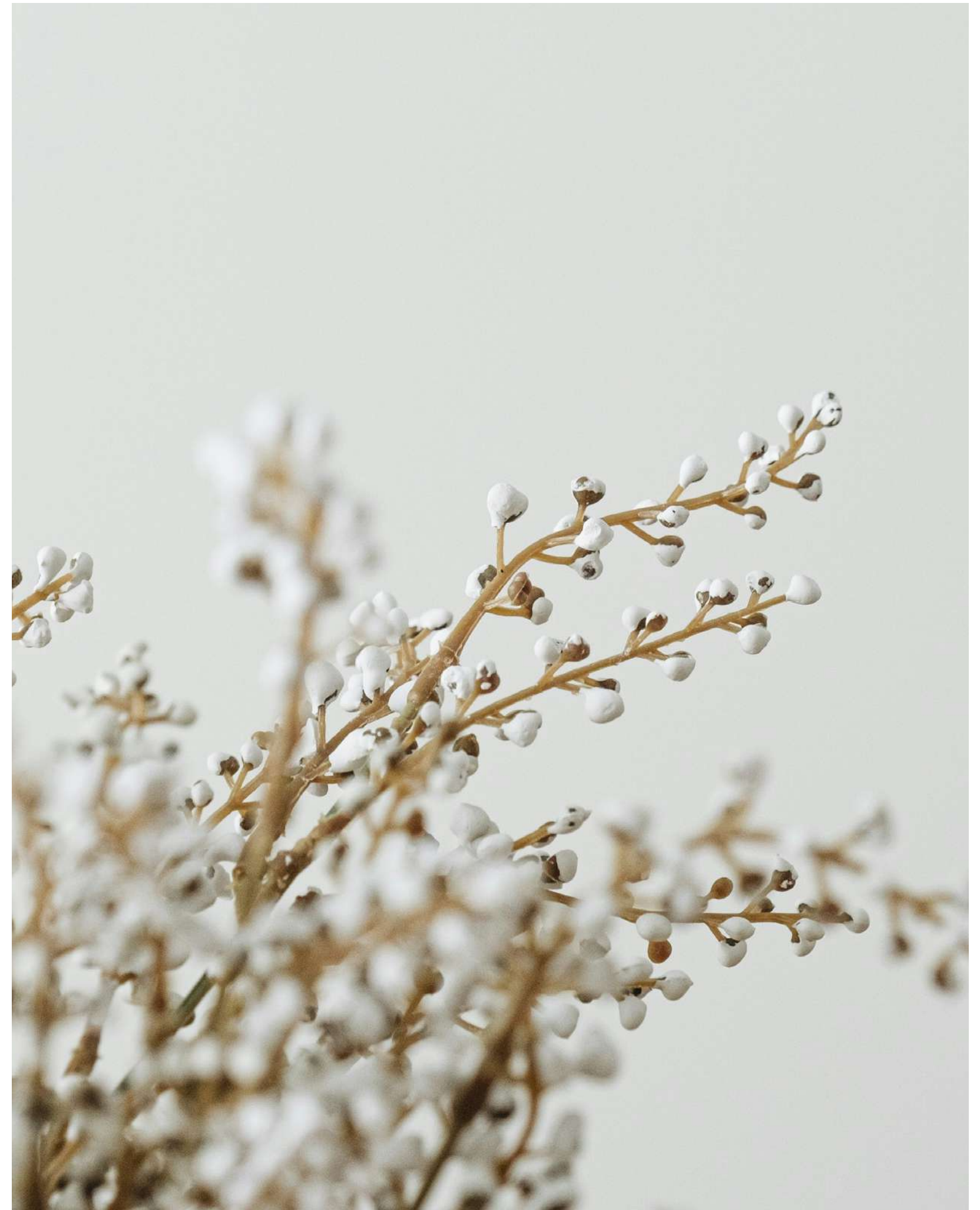






# OPULENT ENTRANCE

Double-height ceilings with expansive floor-to-ceiling glazing create an inviting sense of arrival. Natural stone flooring and textured materials offer a rich, tactile experience, while a grand vestibule with advanced digital security systems ensures complete security. The seamless integration of indoor and outdoor spaces further enhances the feeling of openness and sophistication throughout.











The sunken garden, with lush greenery and a cascading waterfall, creates a serene atmosphere. This tranquil oasis offers residents a peaceful retreat, just steps from home.









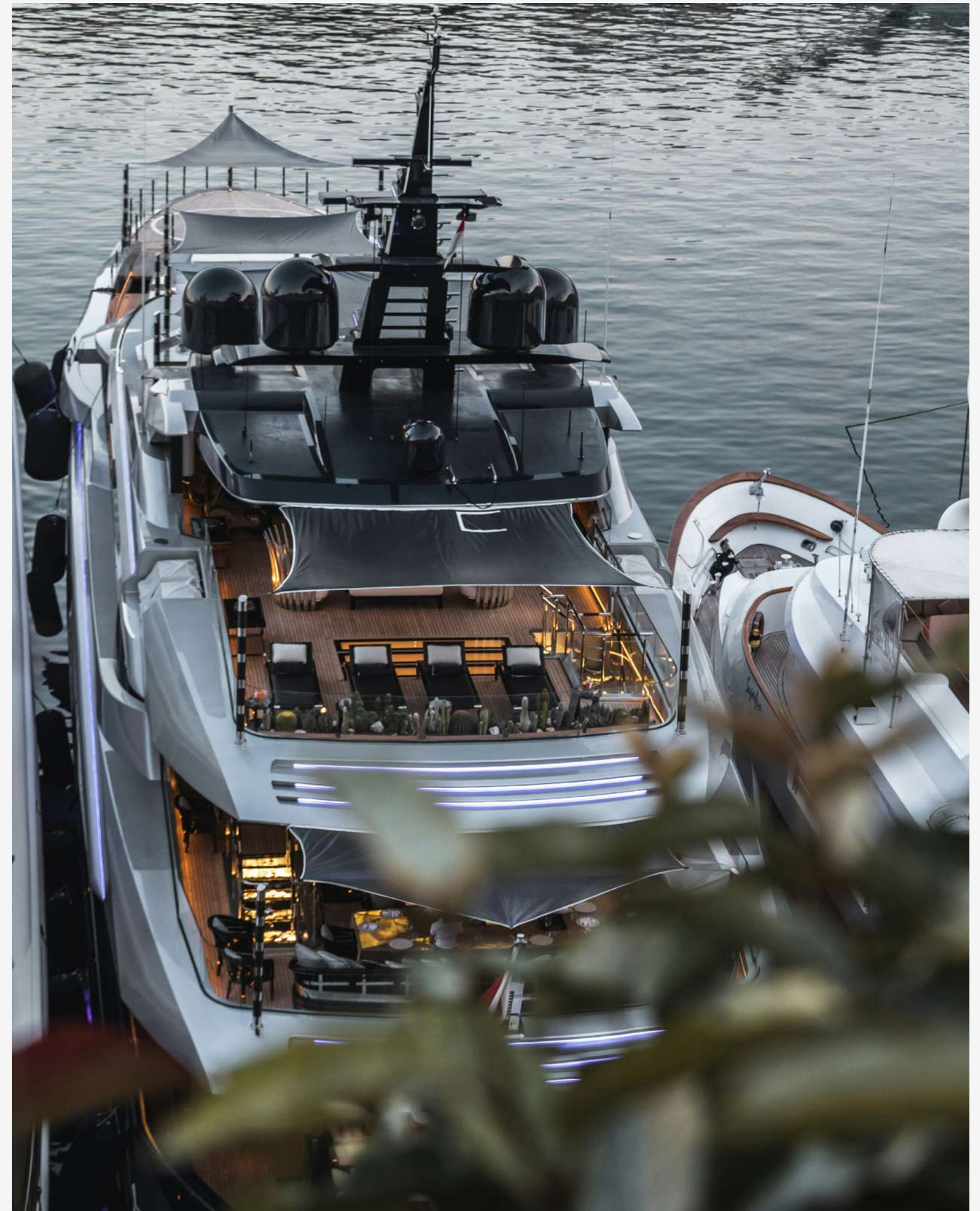
## OASIS POOL

The multi-tiered infinity pool at Playa Del Sol offers four distinct levels, each perfectly designed for soaking up the sun or enjoying uninterrupted views of the ocean. Thoughtfully crafted for both relaxation and social connection, it serves as a vibrant gathering space where residents can come together, bask in the panoramic sea views, and embrace life just steps from the beach.









A resident-exclusive jetty with premier yacht services, designed for world-class leisure, offering an unmatched experience of comfort and relaxation by the water.







# SOCIAL HUB

The club lounge exudes elegance, offering a sophisticated space for social gatherings, while the teen's club lounge provides a vibrant, dynamic area where young residents can socialize and enjoy recreational activities. Both spaces are thoughtfully designed to foster connection and community, creating environments where all residents can relax and unwind in style.











Playa Del Sol's kids' play area fosters creativity and fun with a mini kitchen, child-sized furniture, and a vibrant play station lounge. The outdoor space promotes safe, active play for children to enjoy.









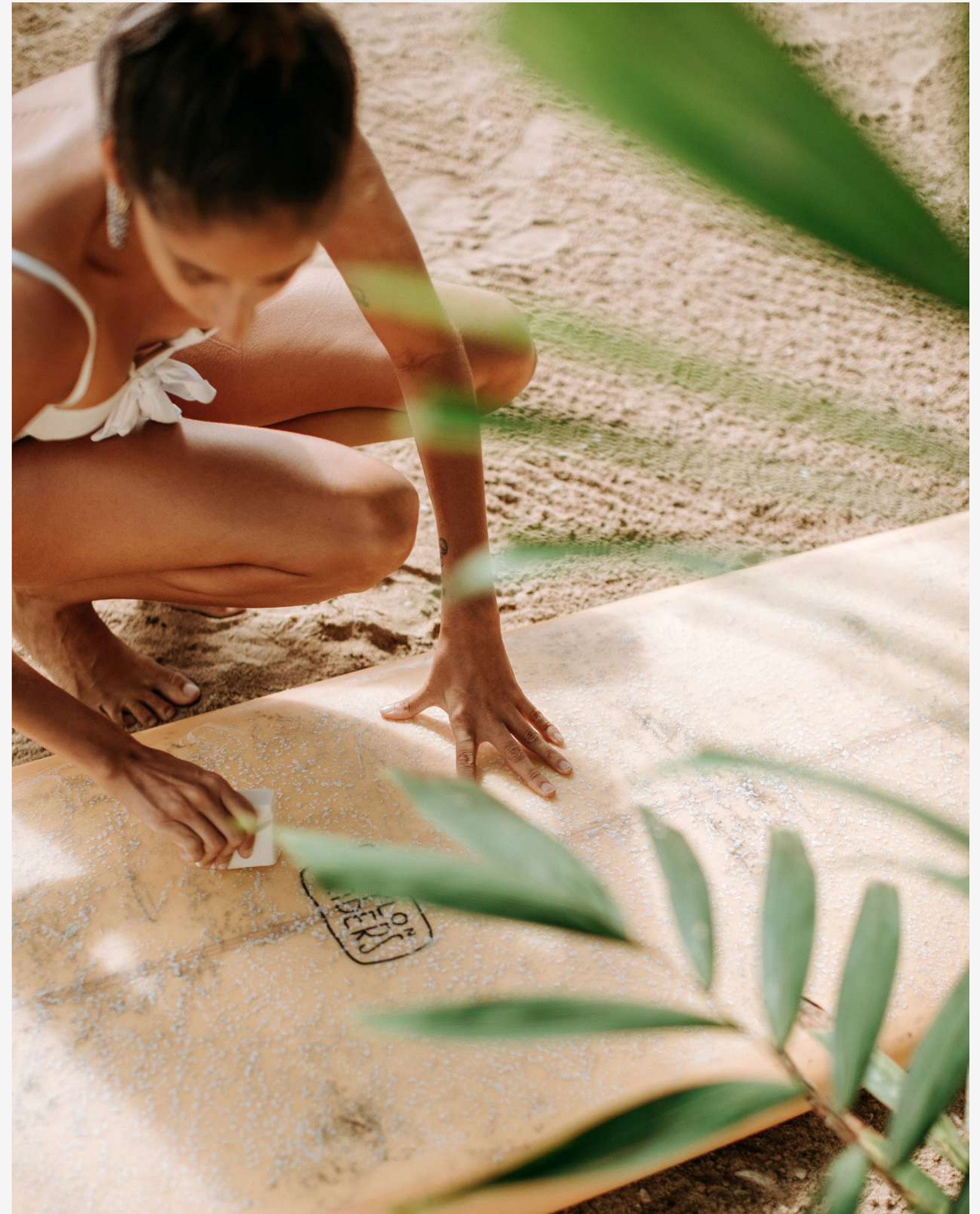
## WELLNESS CORNER

The fitness studio offers dedicated zones for cardio, a skill-up area, and a free weight section. The yoga spaces are equipped with sliding doors that open to the outdoors, allowing fresh air to flow in and create a natural connection with the environment. The space is bathed in natural light, boosting the atmosphere and enhancing mood and energy for a revitalizing practice. Experience seamless panoramic views, while the daylight brings a sense of vitality and encourages productivity.







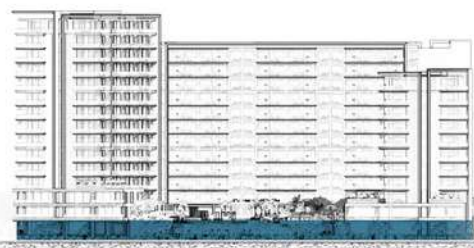


Playa Del Sol is a sanctuary designed for a balanced lifestyle of relaxation and recreation. Offering a curated experience, Playa Del Sol seamlessly merges waterfront living with world-class leisure.



# GROUND FLOOR AMENITIES PLAN

- 1 MAIN ENTRANCE/EXIT
- 2 DROP-OFF AREA
- 3 ENTRYWAY SEATING
- 4 BICYCLE PARKING
- 5 LOBBY ENTRANCE
- 6 LOBBY RECEPTION
- 7 LOBBY LOUNGE
- 8 OUTDOOR LOUNGE
- 9 SUNKEN GARDEN
- 10 SPA TERRACE
- 11 SALON AREA
- 12 SPA TREATMENT ROOM
- 13 SQUASH COURT
- 14 LIFT LOBBY
- 15 SERVICE LIFT
- 16 MOVE-IN TRUCK ZONE
- 17 EV CHARGING STATION
- 18 ACCESS TO RESIDENTS PARKING
- 19 VILLA PRIVATE ENTRANCE
- 20 ACCESS TO UPPER POOL DECK
- 21 LOWER DECK SUN LOUNGERS AREA
- 22 CASCADE WATERFALL
- 23 GARDEN BENCHES
- 24 CHANGE ROOMS
- 25 ACCESS TO BOARDWALK
- 26 ACCESS TO PRIVATE JETTY
- 27 FIRST CLASS YACHT SERVICE



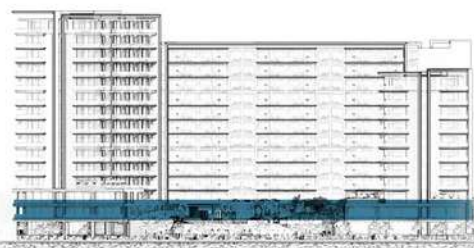
GROUND FLOOR





# 1<sup>ST</sup> FLOOR AMENITIES PLAN

- 1 ADULT POOL OASIS
- 2 BAJA SHELF
- 3 POOL SPA
- 4 WATER LOUNGE
- 5 SUN LOUNGERS AREA
- 6 CABANAS
- 7 OUTDOOR SHOWER
- 8 POOL DECK ACCESS
- 9 LOUNGE PLAZA
- 10 CLUBHOUSE TERRACE
- 11 CLUBHOUSE
- 12 PANTRY
- 13 TEENS CLUBHOUSE
- 14 OUTDOOR KIDS PLAY AREA
- 15 INDOOR KIDS PLAY AREA
- 16 KIDS POOL
- 17 OUTDOOR FITNESS AREA
- 18 GARDEN TERRACE & LOUNGE
- 19 GAMES TABLE ZONE
- 20 BARBEQUE DECK WITH DINING & SEATING
- 21 ACCESS TO BOARDWALK
- 22 OUTDOOR YOGA AREA
- 23 YOGA STUDIO
- 24 FITNESS STUDIO
- 25 FEMALE CHANGE ROOM
- 26 MALE CHANGE ROOM
- 27 LIFT LOBBY



— 1<sup>ST</sup> FLOOR







The residences highlight a seamless connection with nature, emphasizing refined details and elegant intersections that balance both form and function.







# TIMELESS DESIGN

The living rooms boast soaring ceilings that create a bright, open atmosphere, enhanced by elegant stone-look flooring. Breathtaking views complement the spacious design, offering an inviting and generous setting for both relaxation and entertaining. Natural light floods the space, further enhancing the sense of openness and connection.









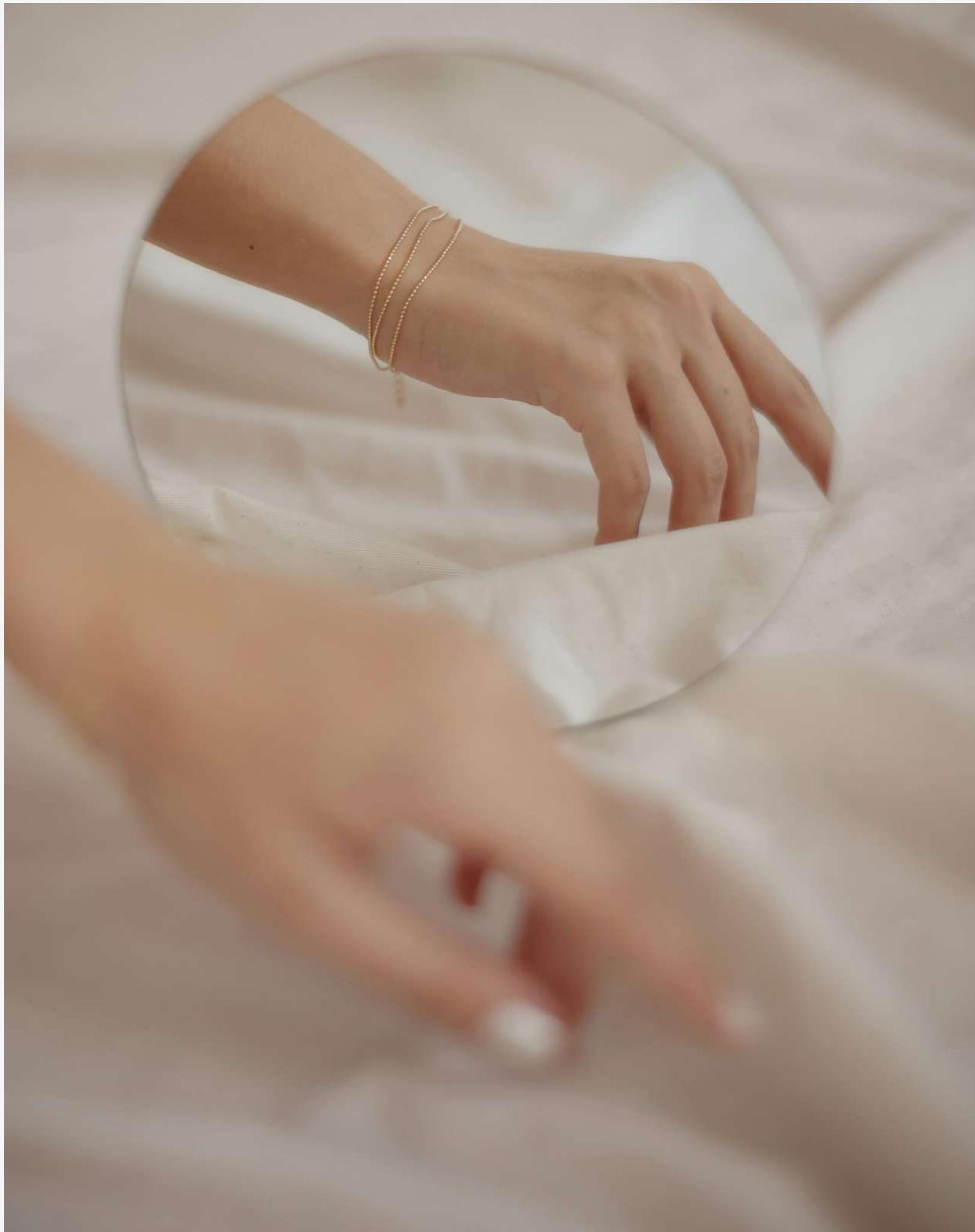


The kitchens are a perfect fusion of modern elegance and functionality, thoughtfully designed to inspire culinary creativity.









## REFINED COMFORT

The bedrooms offer a sanctuary of peace and sophistication, where refined design meets serene comfort. Spacious and thoughtfully appointed, each room features soft, natural tones and premium finishes that create a calming atmosphere. Floor-to-ceiling windows flood the space with natural light, framing breathtaking views of the sea and creating an effortless connection to the surrounding beauty.









The bathrooms are sleek, spa-inspired retreats featuring spacious vanities and walk-in showers. Designed to evoke a tranquil experience, they create a serene environment perfect for ultimate relaxation and rejuvenation.



A serene view of a swimming pool reflecting the sky and a building, with a concrete ledge in the foreground. The pool's surface is calm, showing clear reflections of the light blue sky and the dark structure of a building on the left. In the foreground, a wide, light-colored concrete ledge extends across the frame, partially submerged in the water. The background shows a clear horizon line where the pool meets the sky, with a hint of a sandy beach and the ocean beyond.

## A UNIQUE REFLECTION OF ISLAND LIFE

At Playa del Sol, the sea becomes a constant source of inspiration, rejuvenation, and serenity, transforming the home into a true sanctuary.





ELLINGTON  
PROPERTIES

800 8288

[info@ellingtongroup.com](mailto:info@ellingtongroup.com)

[ELLINGTONPROPERTIES.AE](http://ELLINGTONPROPERTIES.AE)